


BRUCKMANN
Builders of Quality Yachts

BLUESTAR 29.9



SPECIFICATIONS

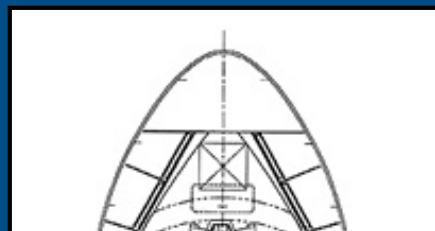
LOA	29'9"
Beam	11'2"
Draft	2'3"
LWL	25'8"
Water Capacity	50 gal.
Displacement	10,600 lbs
Fuel Capacity	200 gal.
Deep V	22° Deadrise
Twin Engines	Yanmar 6LP-DTE 250hp inter-cooled turbo charged

STRUCTURE

- Fibreglass roving & unidirectional reinforcements over foam floors with limber holes
- Four full- length longitudinal floors forming the engine beds.
- Transverse frames bonded to hull & longitudinals.

HULL CONSTRUCTION

- Vinylester resin throughout
- Single piece Core-Cell cored fibreglass molding
- Extra reinforcing as required



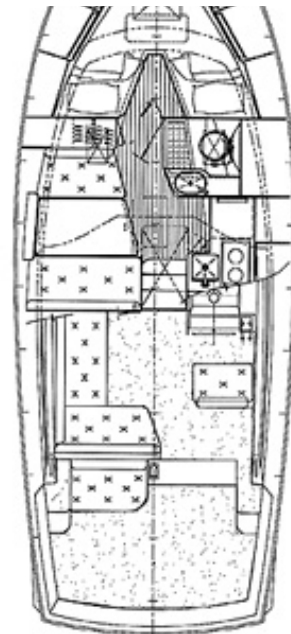
- Core phased out in way of all thru-hulls, struts, shaft log, rudder port & centre line
- Dark blue Cooks Armorcoat gelcoat

DECK CONSTRUCTION

- Single piece Core-Cell cored fibreglass molding with non-skid pattern on all working surfaces
- Core phased out in way of all through deck fittings
- Non-skid surfaces finished in Moon Dust Awlgrip
- Overlapping hull/deck joint bonded and fastened every 4"

DECK

- All deck hardware & fittings 316 stainless steel
- Teak bow sprit with anchor roller
- 6 stainless steel 10" mooring cleats
- 4 custom chromed inline toe rail chocks
- 1 1/4" stainless steel bow rail extending aft to cockpit
- Large vinyl rub rail with stainless steel half round
- Solid 2" teak toe rail extending aft to cockpit
- Teak cabin nosing
- 2 teak handrails
- Teak cockpit combing
- 2 solid teak handrails on cabin top
- 4 stainless steel opening ports
- 3 lewmar aluminium anodized hatches
- Molded fibreglass settee & 2 molded helm seats at bridge
- Hinged engine & storage access
- Hatches in cockpit sole
- Solid teak swim platform
- 3" foam upholstered cockpit cushions



MECHANICAL

- Twin Yanmar 6 LP-DTE 250hp diesel engines with flexible engine mounts
- Yanmar C-type engine instrument panels with alarms
- Dual density engine sound insulation
- Isolated bilge area under engines
- Dual raw water cooled exhausts with mufflers
- Two 1 1/2" Aqua Met propeller shafts with zinc anodes
- Bronze stuffing boxes
- Bronze shaft struts
- Two 4 blade bronze propellers
- Bronze rudders
- Dual engine room ventilation
- Two 100 US gallon vented fuel tanks with level indicator at helm
- Dual Racor fuel filters
- Dual raw water intakes with strainers

- Hydraulic steering
- Single lever throttle & gear shift controls
- Bennett trim tabs
- Stainless steel steering wheel

PLUMBING

- Pressure water with hot & cold faucets in head/shower and galley
- Water heater, 6 gallon, 110V & engine heat exchanger
- 40 U.S. gallon stainless steel water tank with level indicator at helm
- Polished stainless steel sinks in galley & head
- Single lever chromed brass faucets
- Rigid colour coded PVC plumbing
- Marine manual toilet with 24 US gallon stainless steel holding tank
- Holding tank overboard discharge with 12V macerator
- All sea cocks Marelon
- 2 - 1000 gallon per hour bilge pumps with float switches
- Integrated manual bilge pump

PROPANE

- Two - burner Force 10 stove
- Remote solenoid gas shutoff
- 10lb. propane tank & regulator
- All hoses & connections meet Coast Guard or ABYC requirements

INTERIOR

- Main bulkheads Formica covered marine plywood fibreglassed to hull & deck
- All other bulkheads & faces marine grade plywood fibreglassed to hull & deck
- Varnished interior teak trim
- Cabin & locker doors solid teak framed
- Varnished teak & holly cabin sole
- Removable overhead panels in satin white
- All exposed interior fibreglass in locker interiors covered with teak, cedar or gelcoat
- Formica countertops in galley & head
- All latches, hinges, catches & pulls are chromed bronze or brass
- Mirror in head
- 5" foam upholstered cushions in main cabin & 6" foam in V berth

ELECTRICAL

- All wiring sized & colour coded to ABYC specs.
- 12V D.C. custom distribution panel with meters

- 110V AC custom power distribution panels with meter & polarity indicator
- 110V 30amp Shore power with 50' cord
- 110V outlets in galley, head, dinette & engine room with ground fault protection
- Two engine starting batteries in boxes
- Two house batteries in boxes
- 3 explosion proof master battery selection switches
- 30 amp battery charger
- 12V Norcold refrigerator
- 4 chrome overhead reading lights in galley, dinette, head & V berth
- 2 chrome swivel reading lights in V berth
- Engine room lighting
- 3 windshield wipers w/ 2 independent on/off switches at helm
- Running lights & anchor light
- 2 cockpit courtesy lights
- Fire extinguishers in cabin & cockpit
- Light at Danforth compass